

The building skin is clipped to brackets on the columns which are offset from the edge of the floor plate. The floor plates themselves do not touch the external skin

The thin steel plate waffle floor structure is generated algorithmically to the geometric features of the floor plate. The waffle structure is offset behind a ring beam structure that tangentially supports the columns

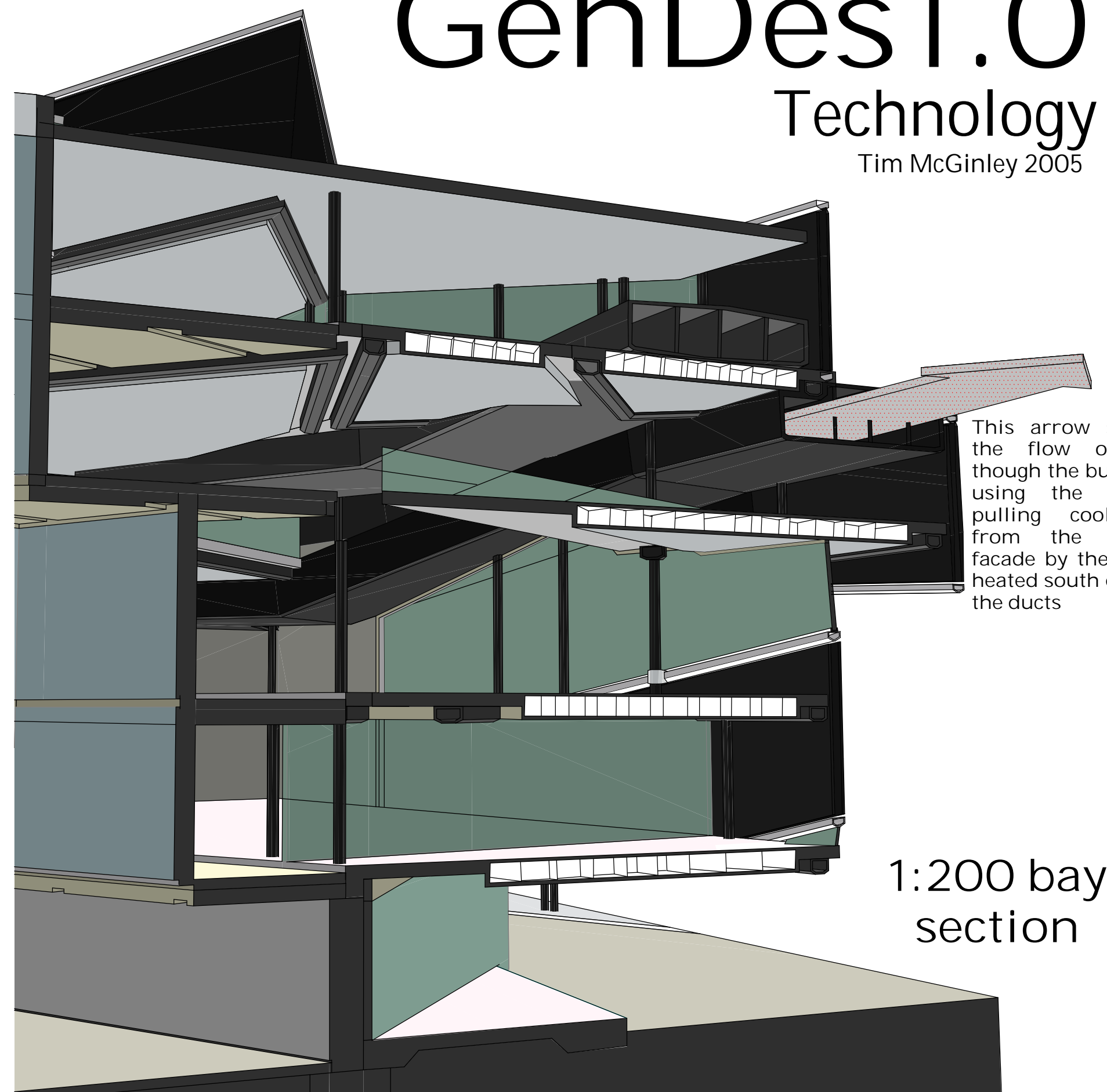
The Skin object is made up of a sandwich construction designed to reflect the Athenian sun by altering its colour throughout the day by way of a matrix of electronic pigments on its outer face. The object gains its structural integrity by having the 'sandwich' held between steel beams.

1:50 detail bay section

# GenDes1.0

## Technology

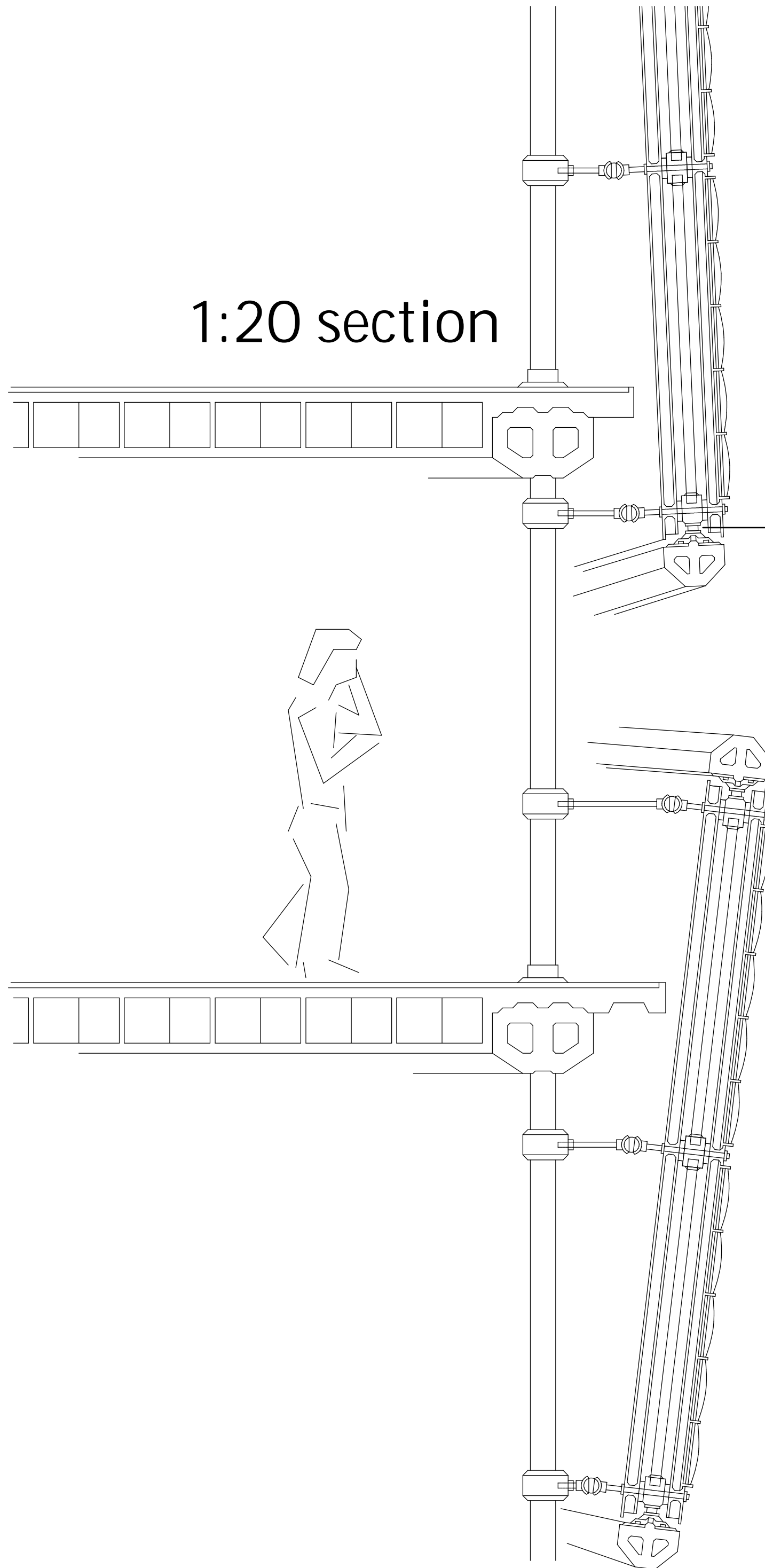
Tim McGinley 2005



This arrow shows the flow of air through the building using the ducts, pulling cool air from the north facade by the solar heated south end of the ducts

1:200 bay section

1:20 section

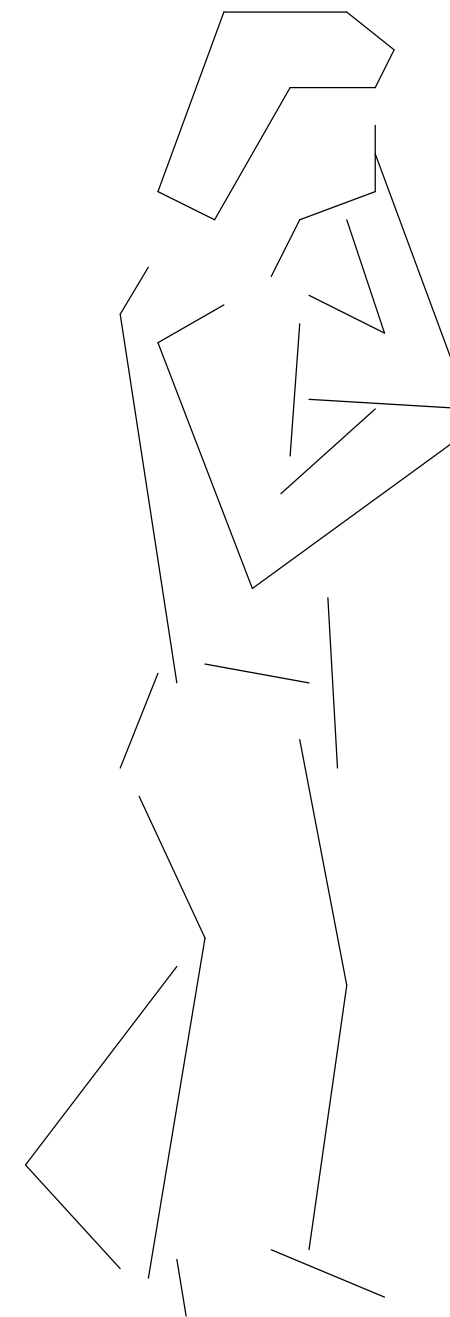


# GenDes1.0

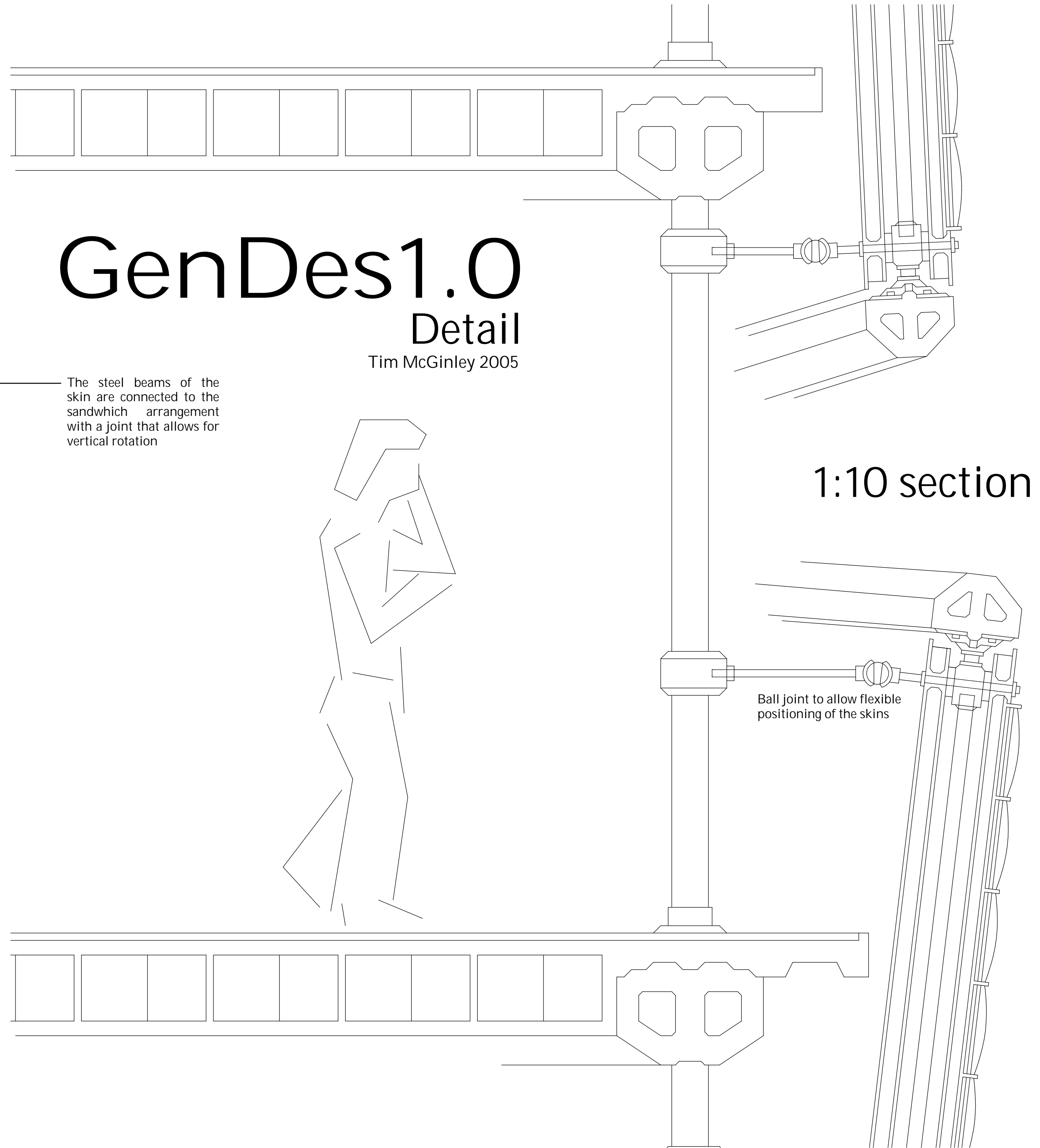
## Detail

Tim McGinley 2005

The steel beams of the skin are connected to the sandwich arrangement with a joint that allows for vertical rotation



1:10 section



Ball joint to allow flexible positioning of the skins